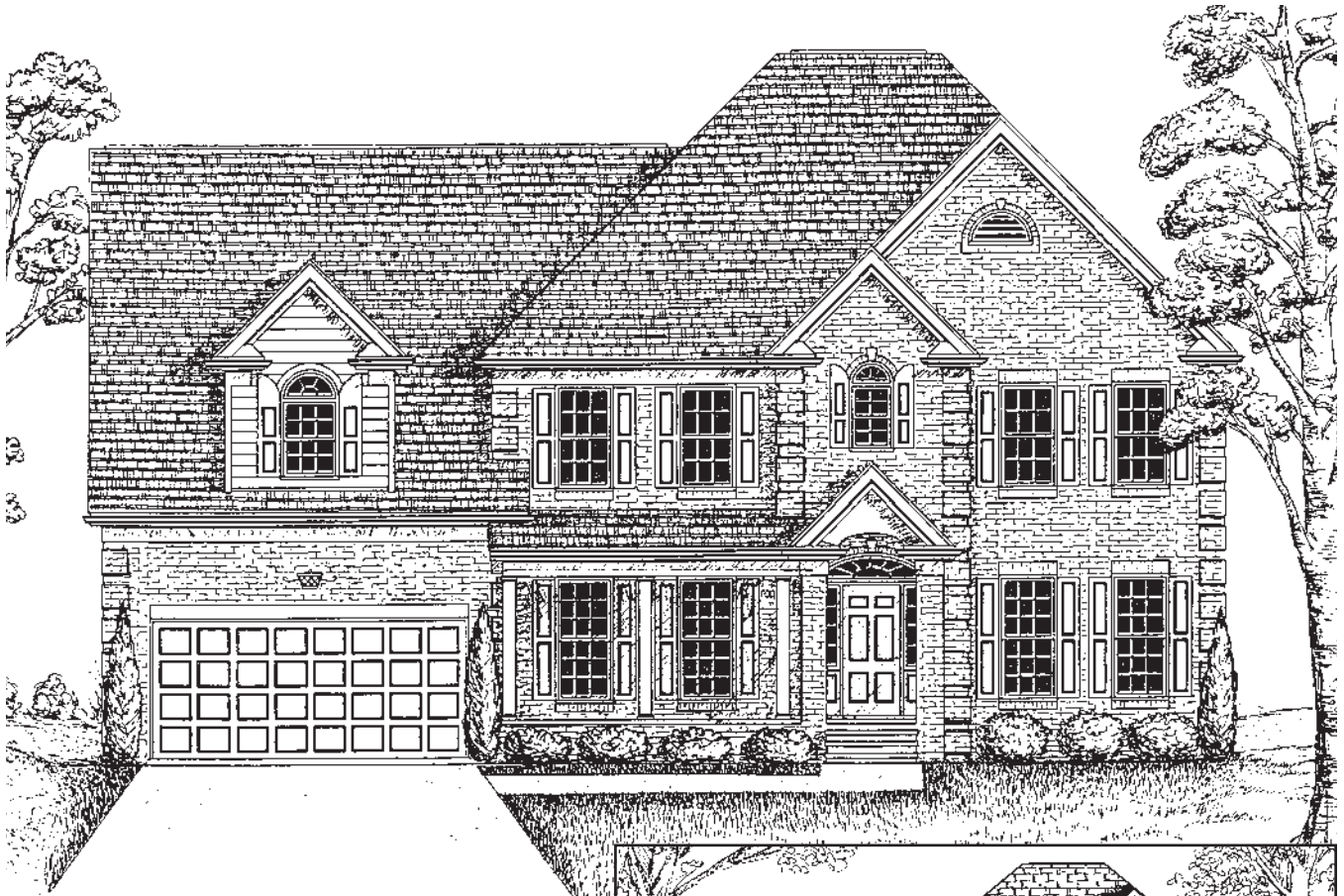


THE CAMBRIDGE

4 BEDROOMS - 2 1/2 BATHS
APPROX 3009 SQUARE FEET AND FRONT OR SIDE ENTRY GARAGE

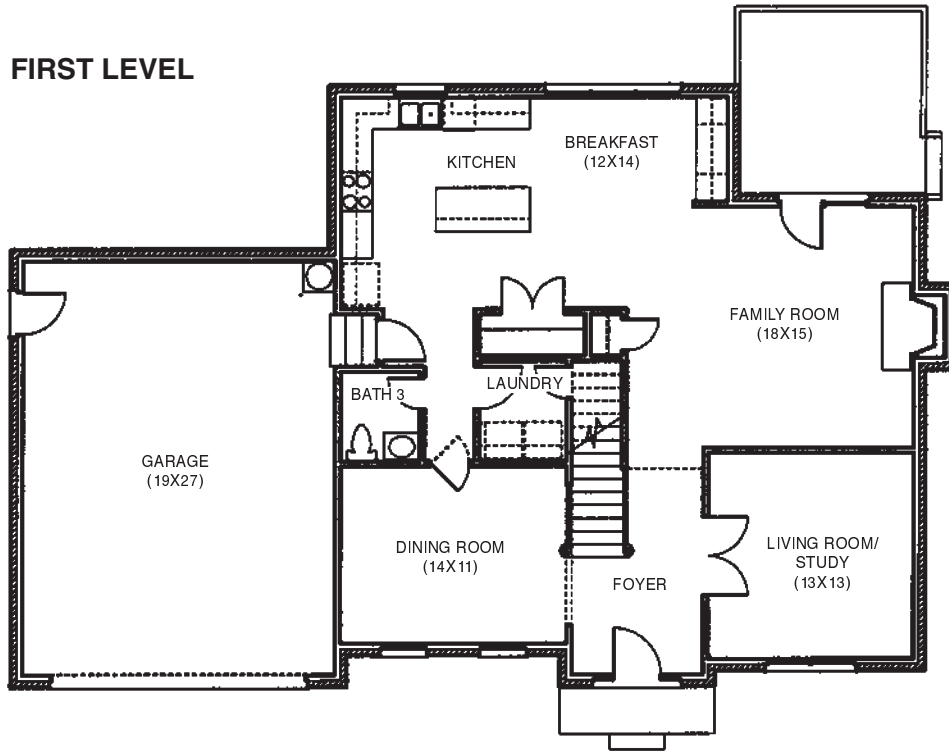


A four bedroom home with a luxurious master bedroom suite with tray ceiling. The Cambridge features a two-story foyer with large palladian window or large front porch. This home has approximately 3009 square feet including the bonus room.

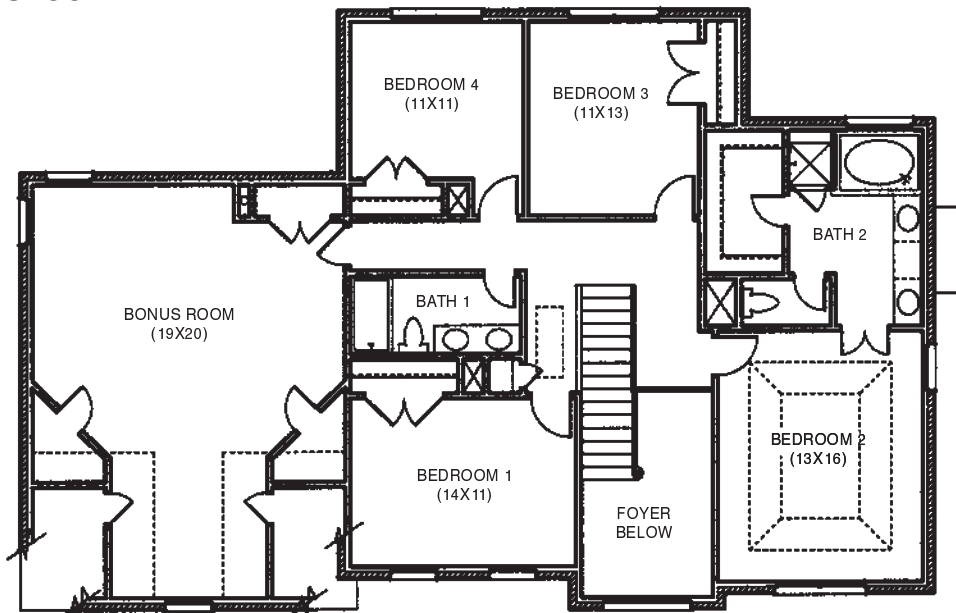


THE CAMBRIDGE

FIRST LEVEL

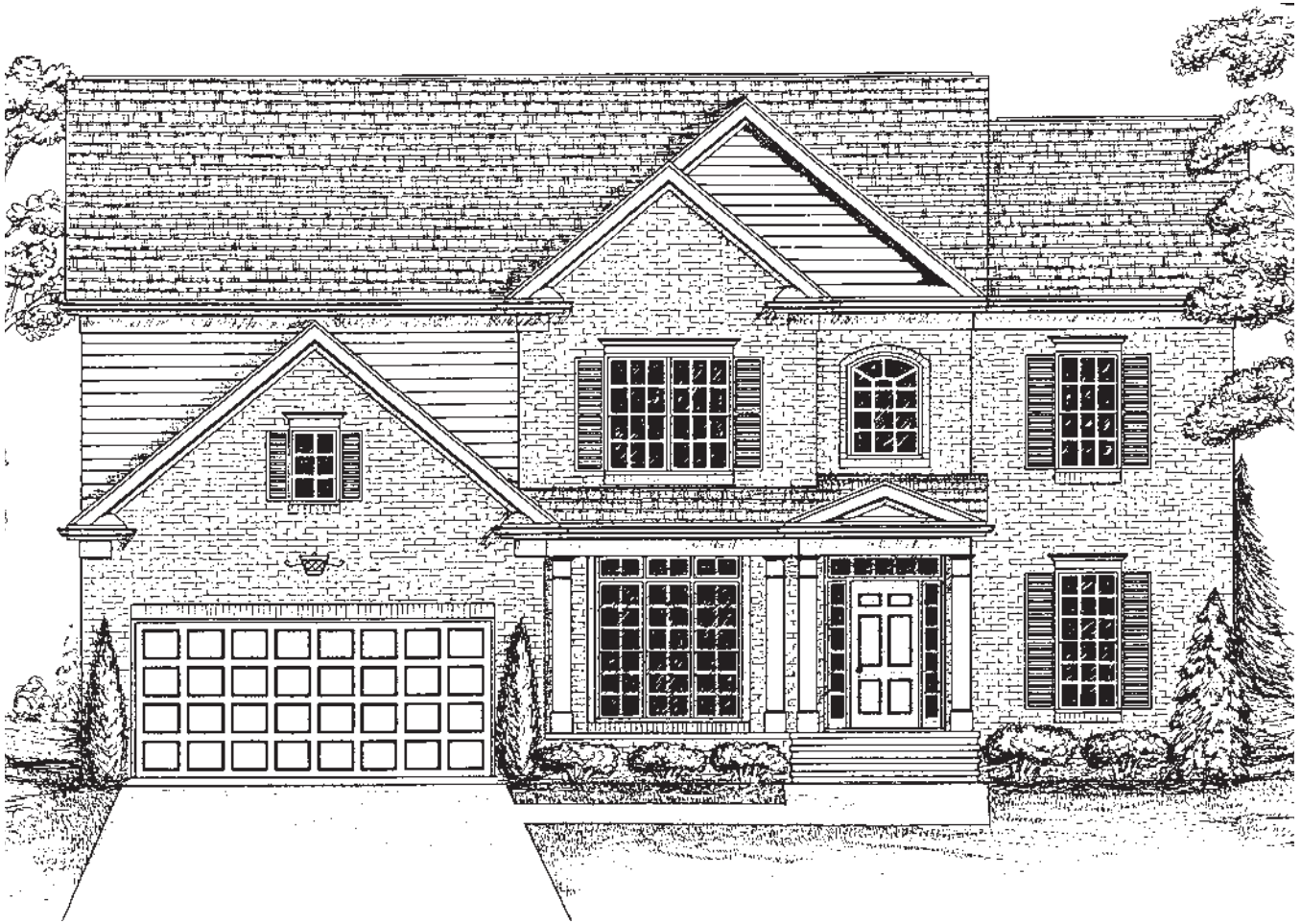


SECOND LEVEL



THE DEVONSHIRE

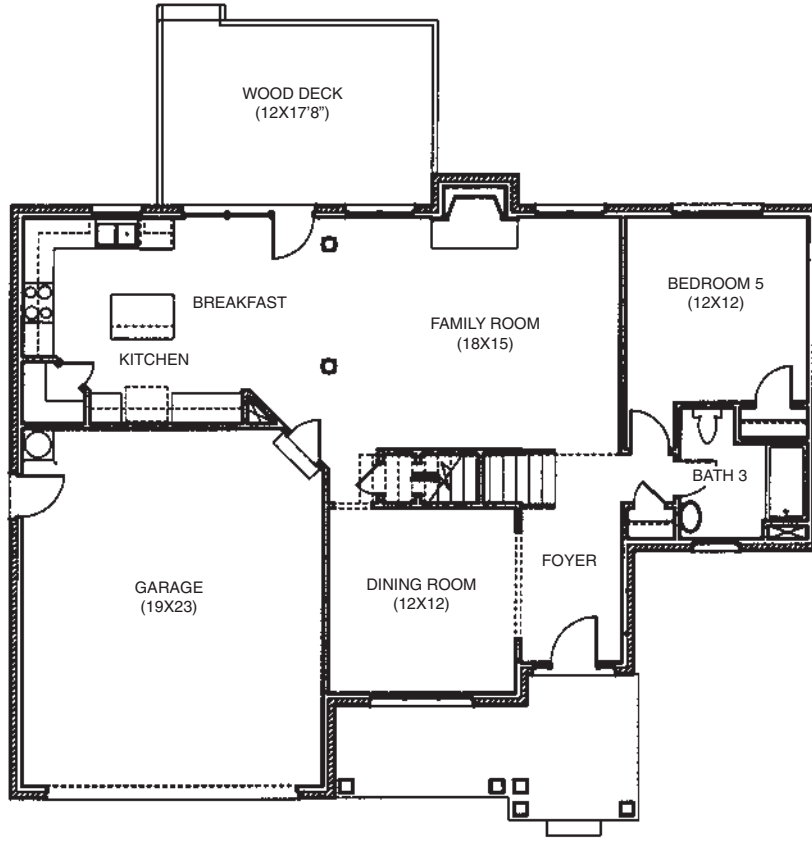
4 OR 5 BEDROOMS, 3 BATHS WITH FRONT OR SIDE ENTRY GARAGE
APPROXIMATELY 2,564 SQUARE FEET



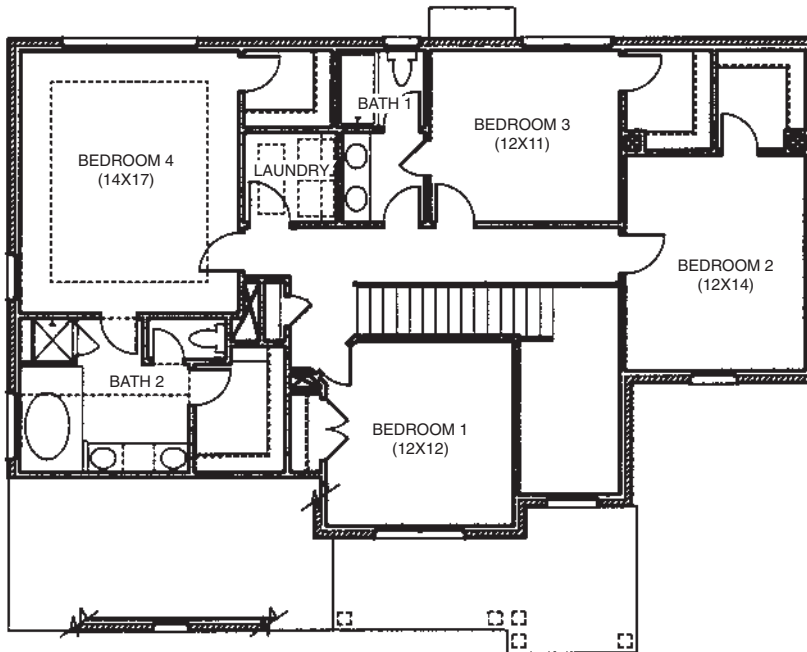
This wonderful plan with elegant two story foyer and formal dining room is designed just for today's lifestyle. The kitchen features a center work island, walk-in pantry and lots of cabinets and opens to the breakfast area and large family room with fireplace. The first floor bedroom is perfect for guests or as a study. The owner's suite offers two large walk-in closets, tray ceiling, and luxurious bath. The second floor, with the hall open to the foyer and stairs, also has three generously sized secondary bedrooms (two with walk-in closets) and a nice laundry room. The Devonshire has approximately 2564 square feet.

THE DEVONSHIRE

FIRST LEVEL



SECOND LEVEL



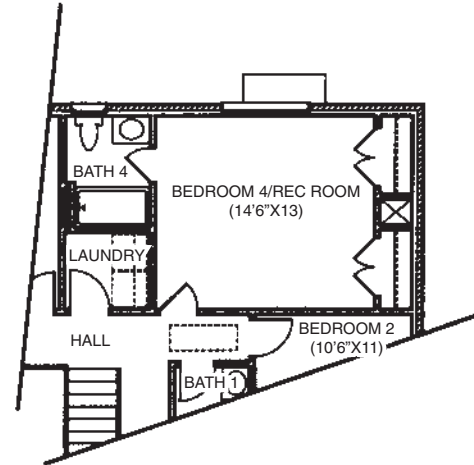
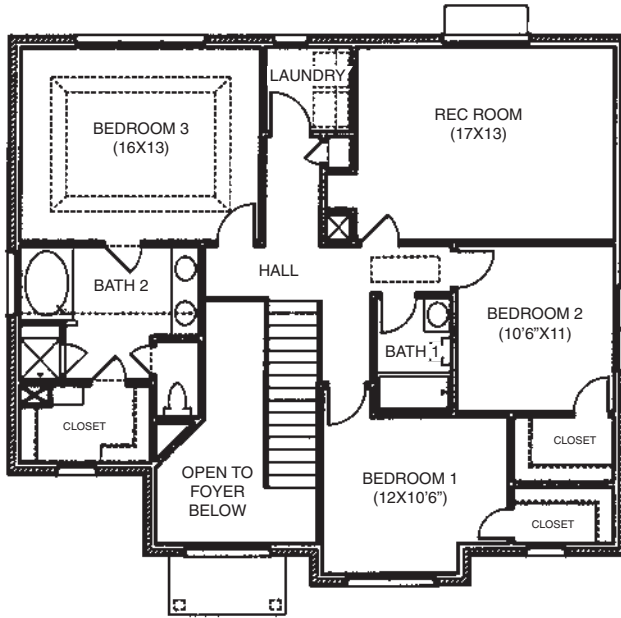
THE FOXCROFT

3 OR 4 BEDROOMS, 2½ OR 3½ BATHS
APPROXIMATELY 2,238 SQUARE FEET



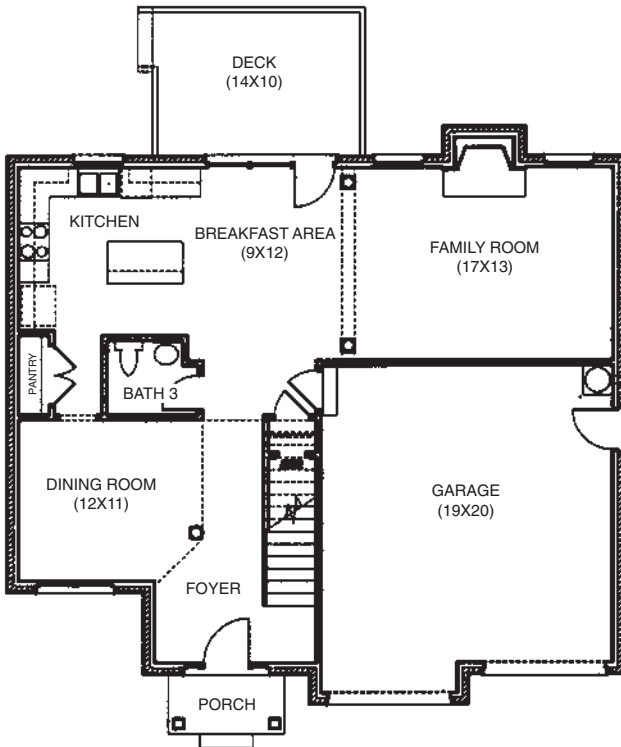
With its outstanding design, this two-story home incorporates all of the features today's homeowners demand. The open, formal dining area offers a quiet place for a nice meal. The kitchen with its large pantry and work island opens to the sunny breakfast and living areas. Upstairs each bedroom has a walk-in closet and excellent wall space. The bonus room easily transitions from play room to home-theatre room to work out room or hobby room. Or build the plan with the fourth bedroom and third full bath and have an extra large room for guests or teens. The master suite includes a tray ceiling, separate water closet, dual vanities and separate tub and shower. Timeless because of its classic exterior but with an interior designed for current lifestyles, this new plan is sure to be a favorite.

THE FOXCROFT



OPTIONAL BEDROOM 4
AND FULL BATH

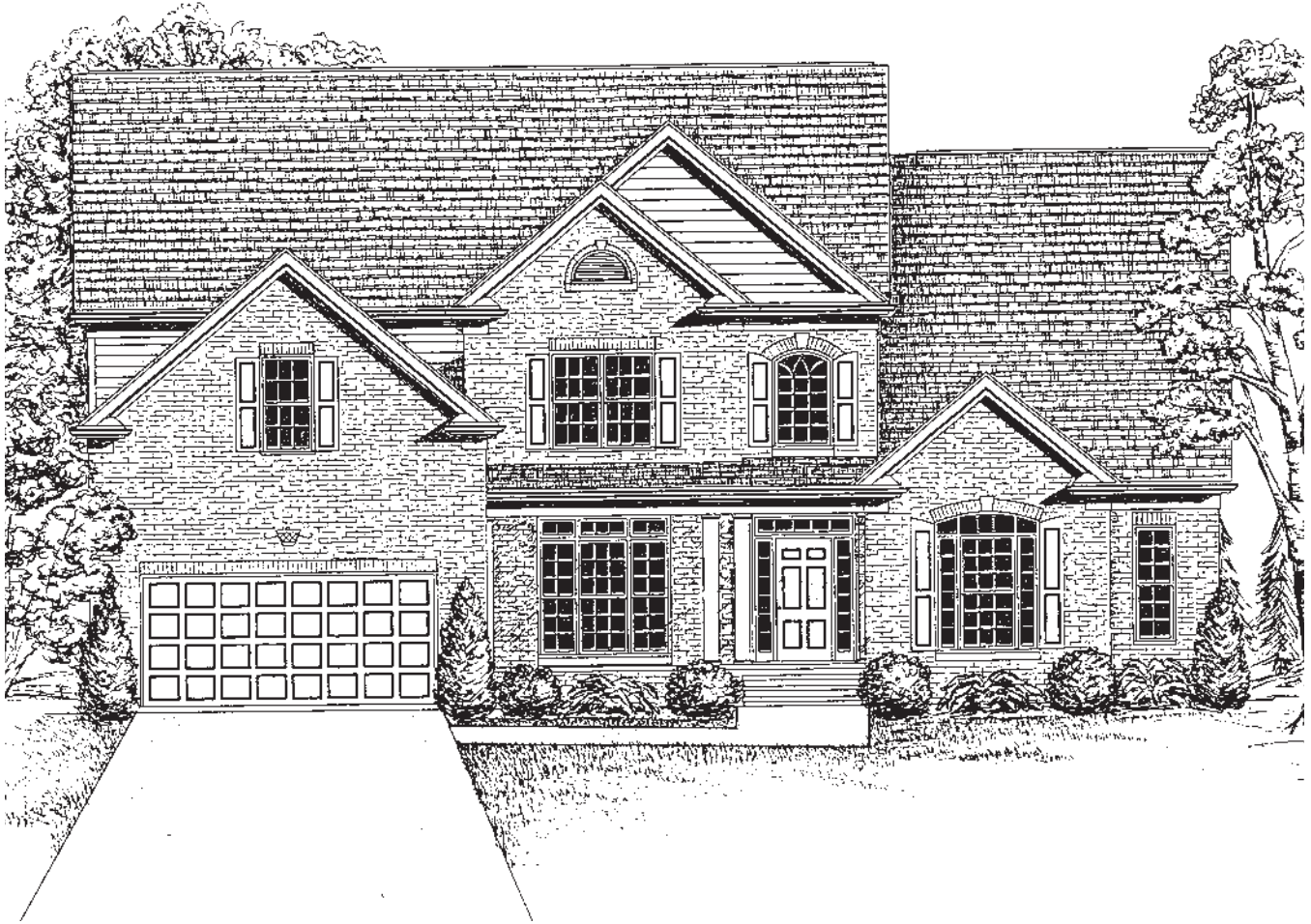
SECOND LEVEL



FIRST LEVEL

THE HEMPSTEAD

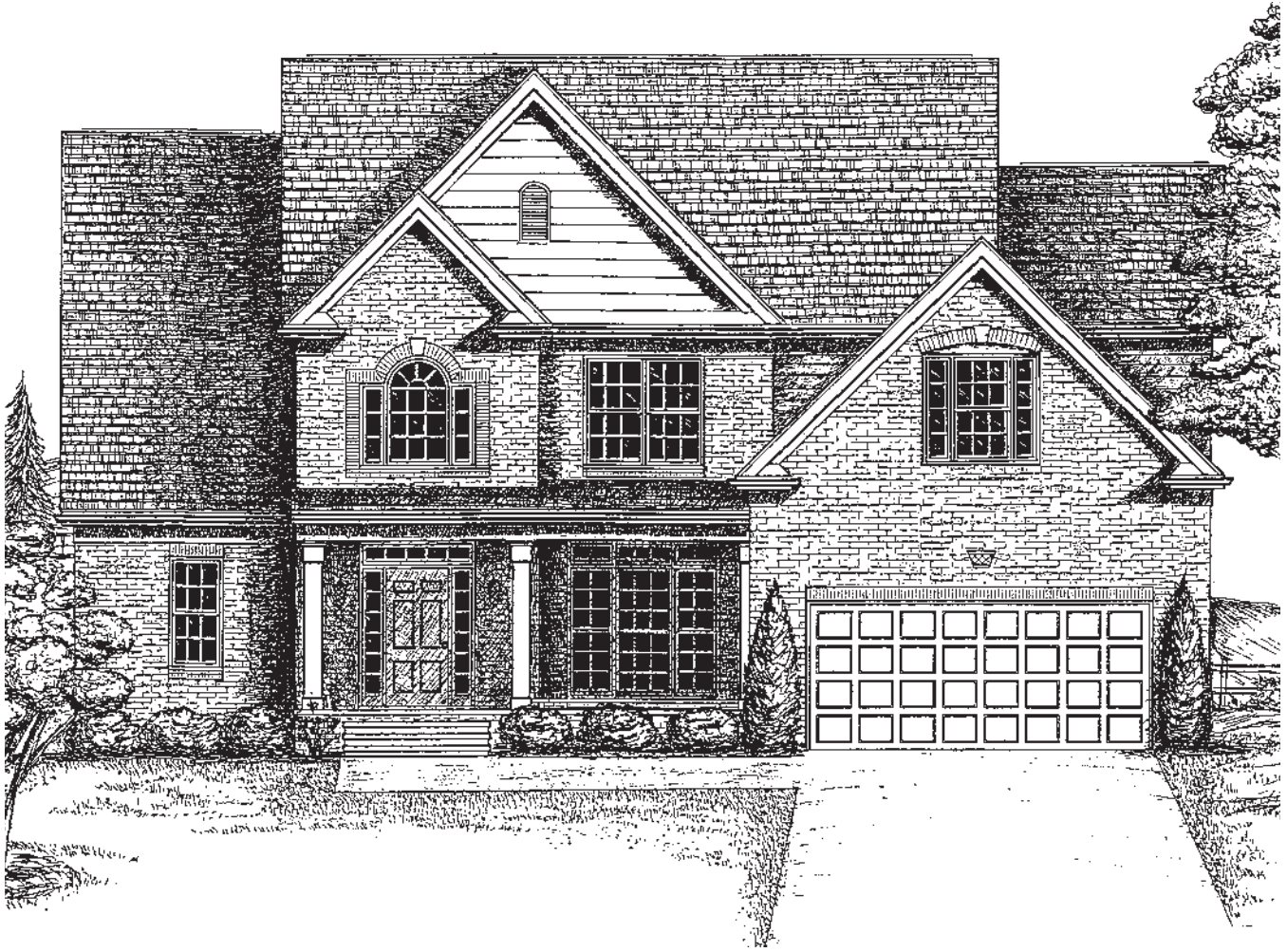
4 OR 5 BEDROOMS - 3 1/2 OR 4 BATHS
APPROX 3309 SQUARE FEET WITH FRONT OR SIDE ENTRY GARAGE
APPROX 3455 SQUARE FEET WITH SUN ROOM



The Hempstead plan is showcased by a centrally located great room with a two-story ceiling and a gracious owner's suite with tremendous his/hers walk-in closet on the first floor. The large kitchen opens to the breakfast area and optional sunroom. Upstairs offers three bedrooms, two full baths and a large bonus room or build this plan with the bedroom and full bath option in lieu of formal living room and powder room.

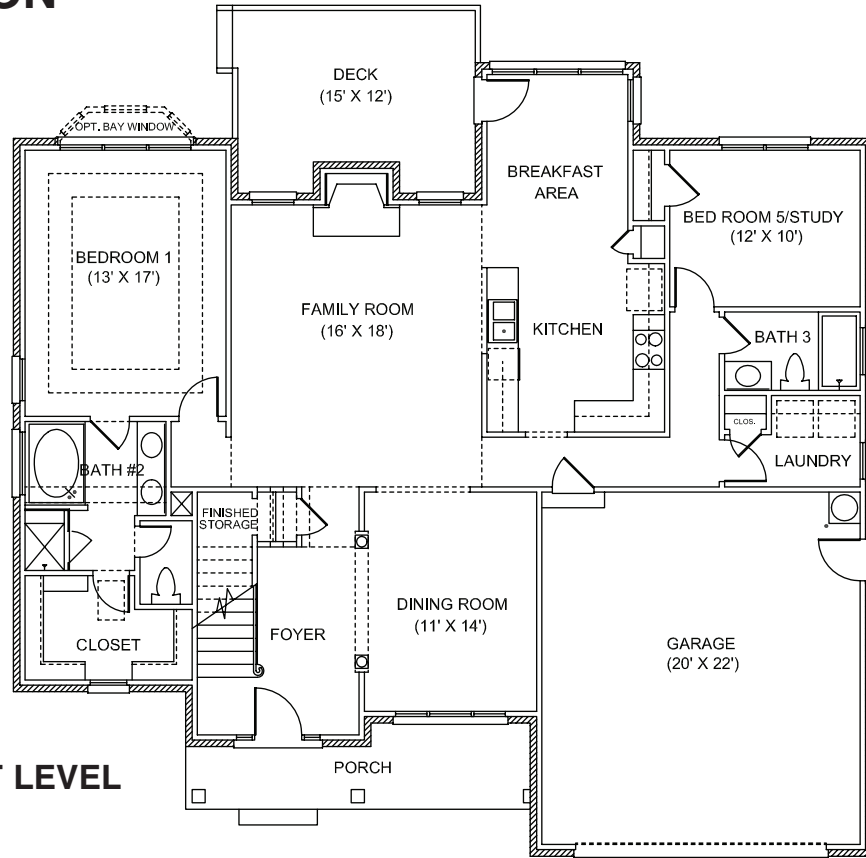
THE JEFFERSON

3, 4 OR 5 BEDROOMS, 3 BATHS, FRONT OR SIDE ENTRY GARAGE
APPROXIMATELY 2,634 SQUARE FEET

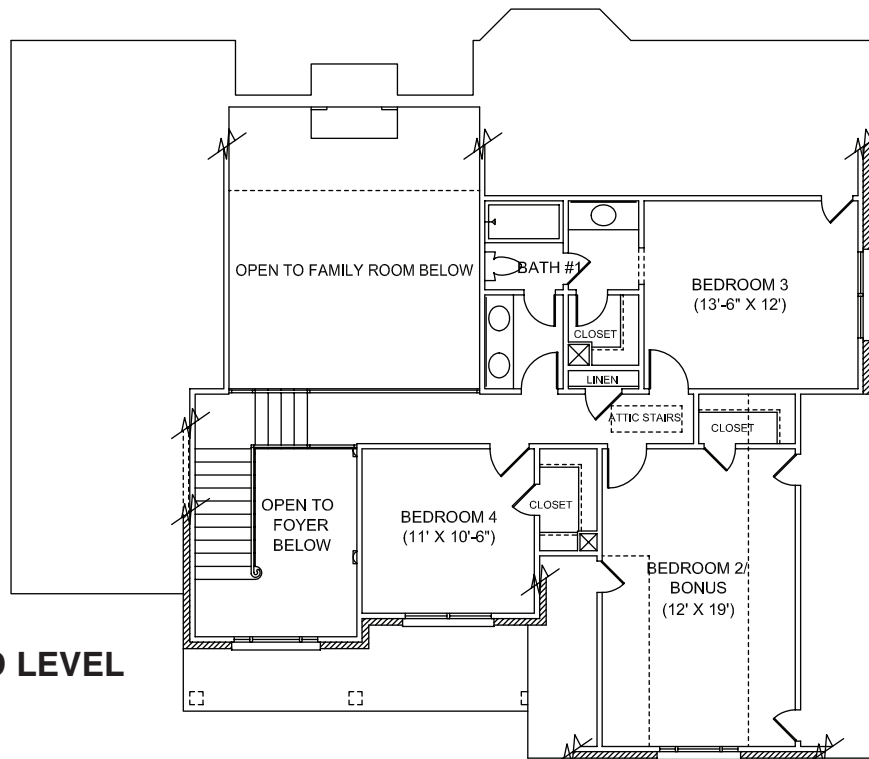


This exceptional plan with its welcoming front porch features an elegant first floor owner's suite with tray ceiling, dual vanities, separate water closet, and large walk-in closet. The two-story foyer showcases a winding staircase and the formal dining room. The large great room with gas fireplace opens to the sunny breakfast area with bay window and the kitchen. A study or guest suite is nicely located in the quiet rear corner of the house. Upstairs, all three bedrooms have walk-in closets and share a generously-sized and well-designed jack-and-jill bathroom. Bedroom #2 would make a wonderful media, play, or hobby room.

THE JEFFERSON



FIRST LEVEL



SECOND LEVEL

THE KESWICK

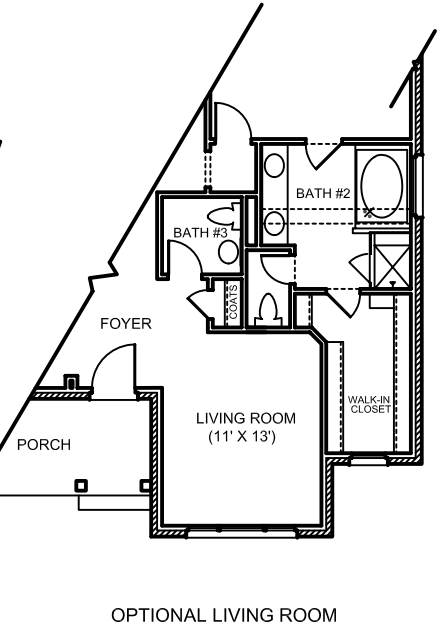
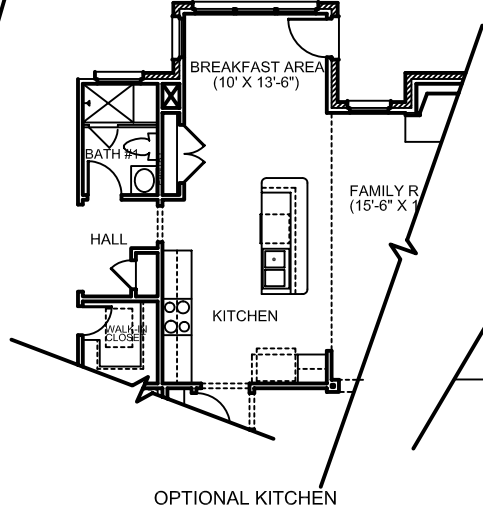
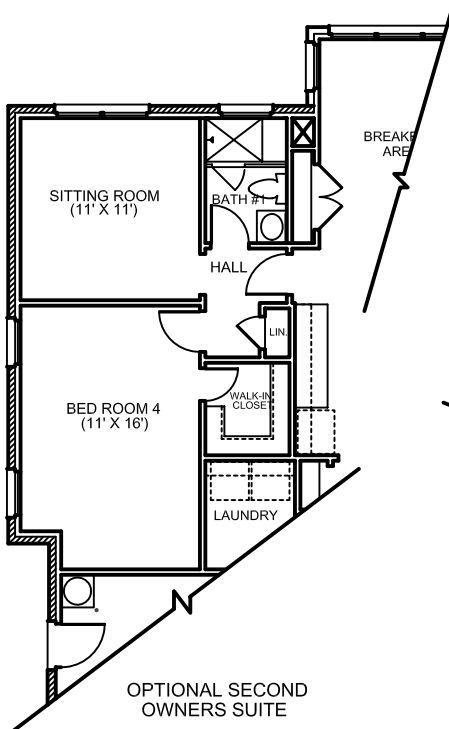
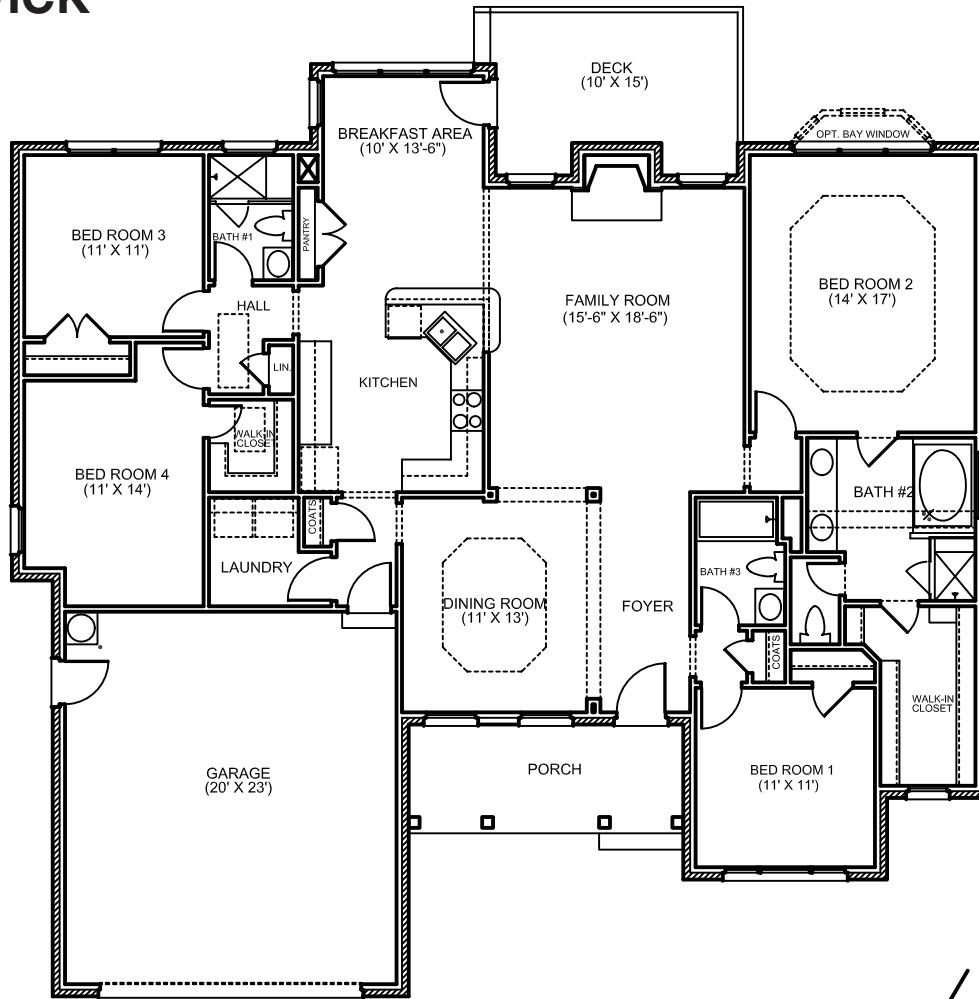
4 BEDROOMS, 3 BATHS
APPROXIMATELY 2,137 SQUARE FEET



Fabulous one-story plan with separate formal dining area, and large great room. Owner's retreat with its tray ceiling, large walk-in closet, dual vanities, and other amenities is situated in the quiet rear of this home. The kitchen features a large pantry, breakfast bar, and breakfast room with an inviting bay window. One bedroom makes an excellent study. Two bedrooms are on the opposite side of the house from the owner's suite and are perfect for older children or guests.



THE KESWICK



THE MONTICELLO

3, 4 OR 5 BEDROOMS, 4 BATHS
APPROXIMATELY 2,514 SQUARE FEET



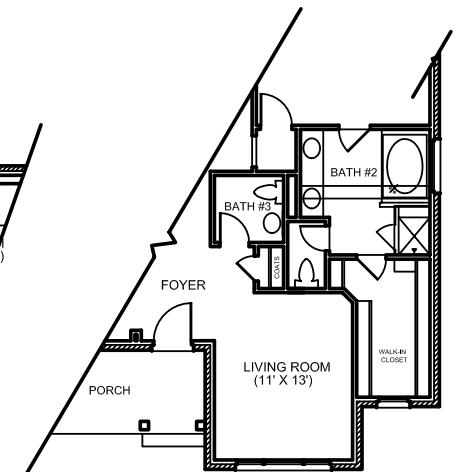
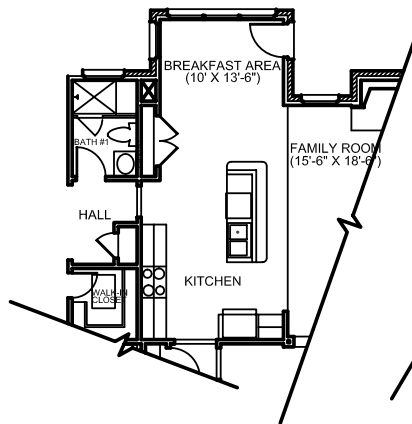
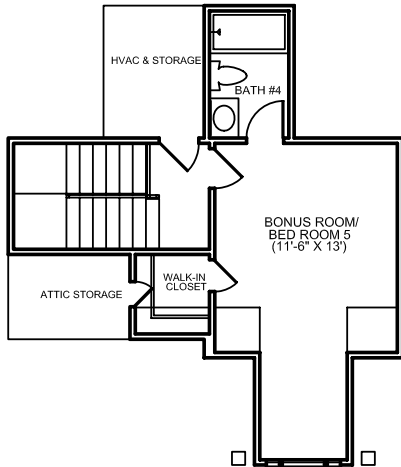
This one-story plan with upstairs bonus/bedroom and full bath easily adapts for today's changing lifestyles. Enjoy formal dining in the separate dining room or eat with family or friends in the welcoming breakfast area with its beautiful bay window. Enjoy preparing meals in the spacious kitchen while friends sit around the countertop bar. Offer guests a quiet retreat away from others or create a cozy study/office for yourself at the front of this home. The owner's suite is secluded from other bedrooms and features a tray ceiling, large closet, separate water closet, and dual vanities. With lots of flexible space, this home offers the versatility demanded by today's homeowners. Adding the optional screened porch offers a wonderful place to relax and enjoy the outdoors.

THE MONTICELLO

FIRST LEVEL



SECOND LEVEL

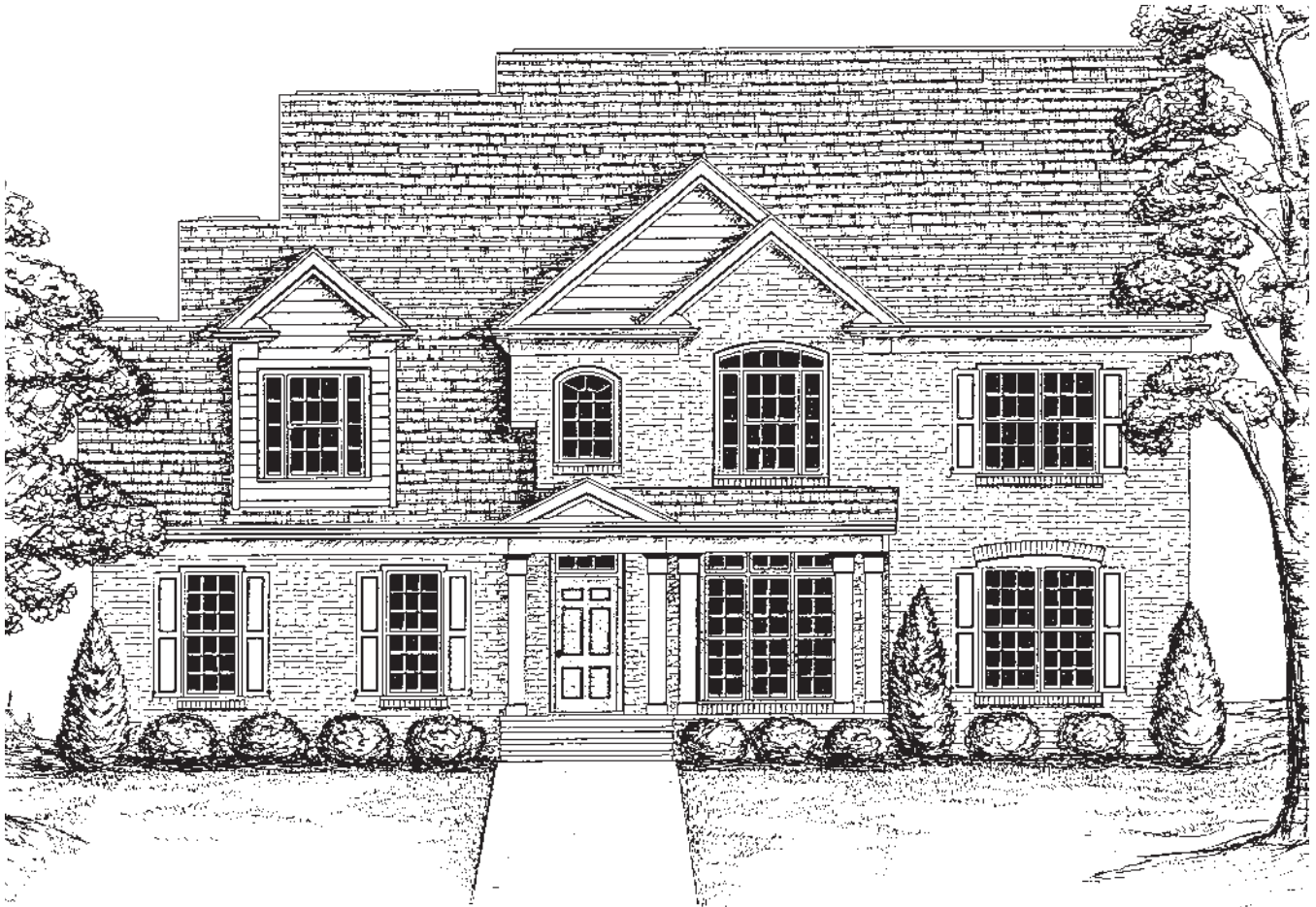


OPTIONAL KITCHEN

OPTIONAL LIVING ROOM

THE PINEHURST

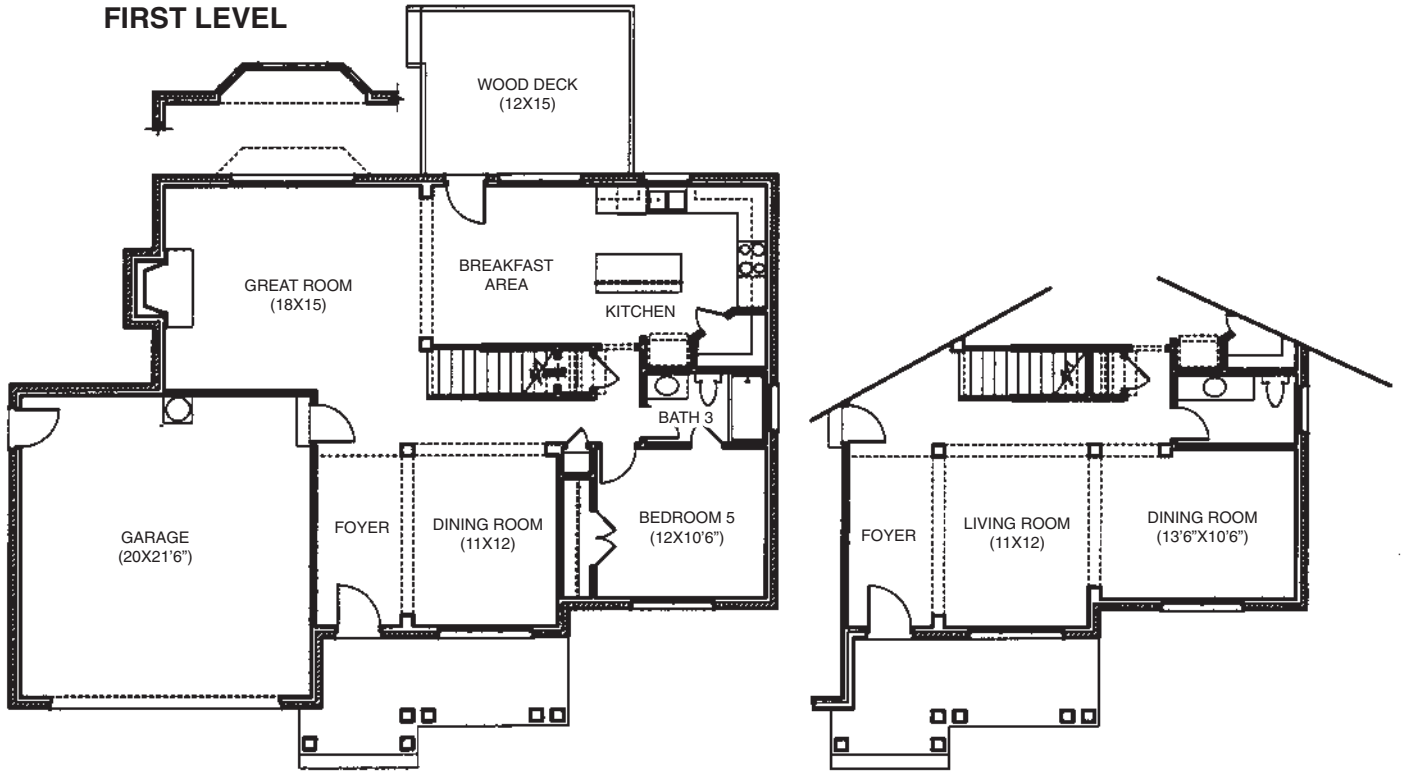
3, 4, OR 5 BEDROOMS, 2½ OR 3 BATHS WITH FRONT OR SIDE ENTRY GARAGE. APPROXIMATELY 2773 SQUARE FEET



Living space just the way you need it. The rooms in this exciting new plan provide multiple options to fit any lifestyle. Allow your guests to relax in a first floor guest suite or use that room as the ideal, private study. The spacious great room at the back of the house opens to the breakfast area and the kitchen with island and walk-in pantry. The two-story foyer opens to a gracious dining room showcased by columns. The large owner's suite has a tray ceiling and large walk-in closet. Let the huge fourth bedroom with walk-in closet serve as a play room, pool room, or media center. For a larger, formal entertaining area, build this plan with the living room and half-bath option. The Pinehurst has approximately 2773 square feet of living space.

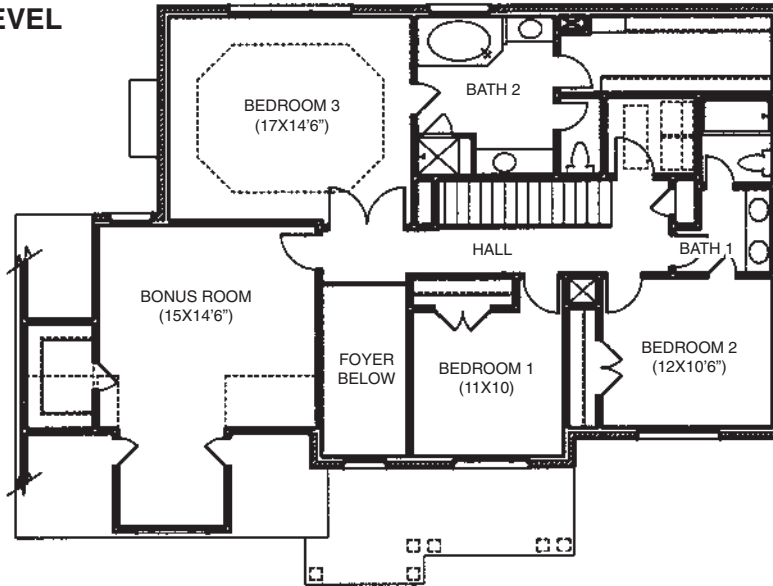
THE PINEHURST

FIRST LEVEL



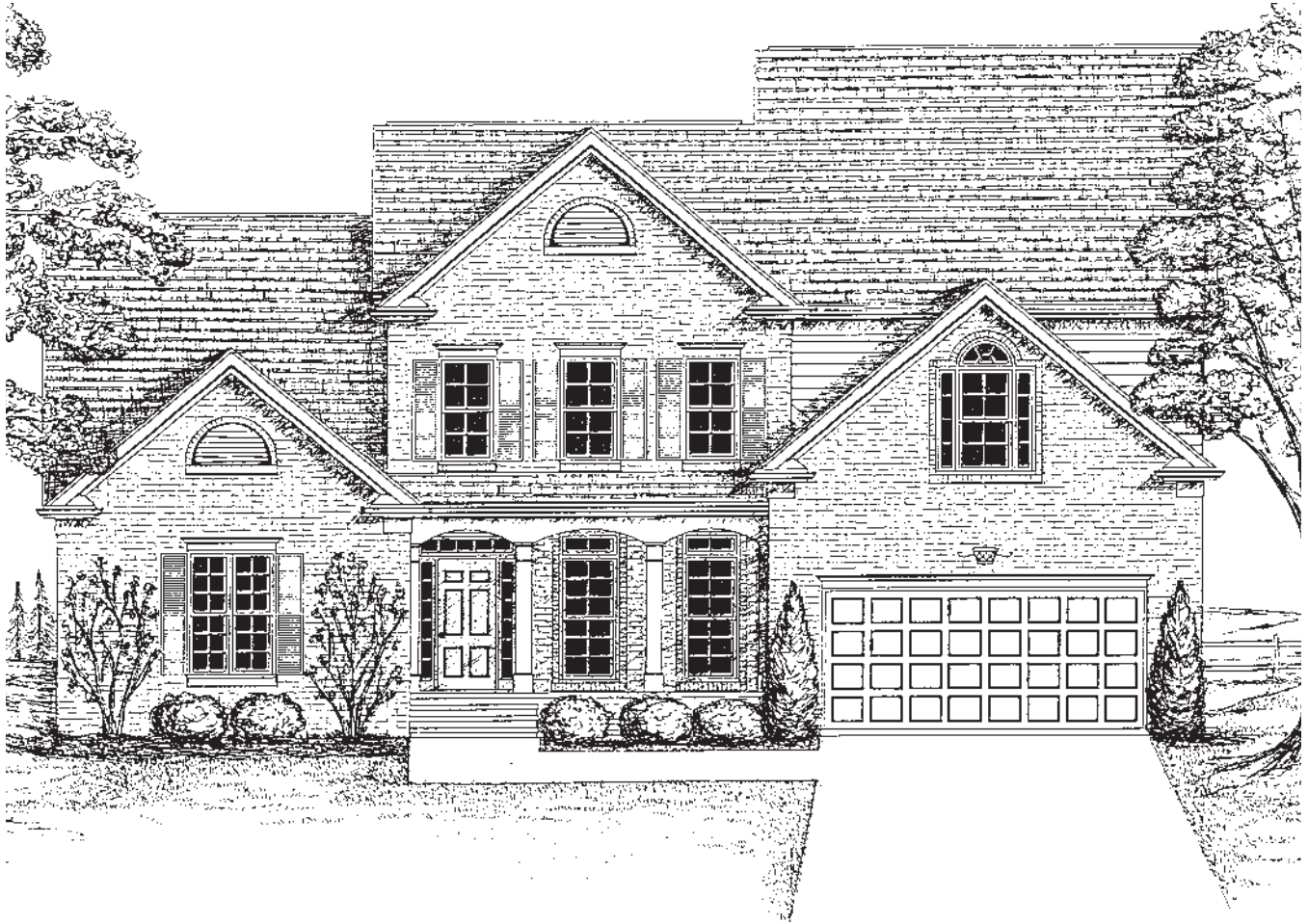
LIVING ROOM OPTION

SECOND LEVEL



THE SCOTLAND

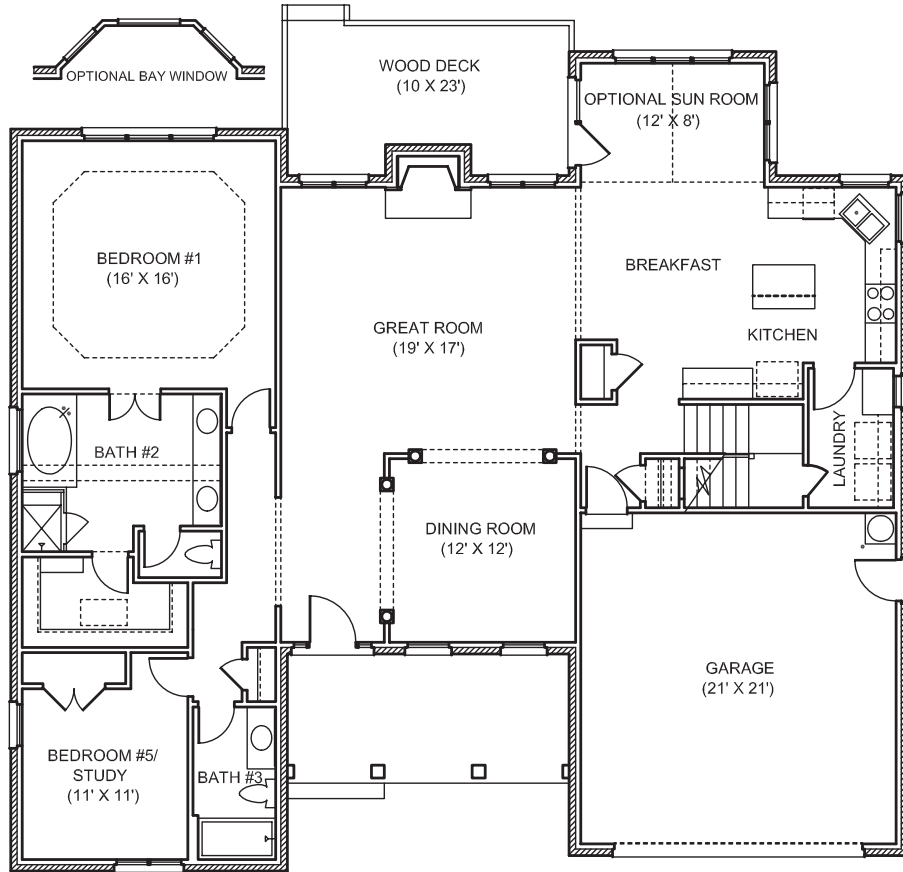
3, 4 OR 5 BEDROOMS, 3 BATHS WITH FRONT OR SIDE ENTRY
GARAGE APPROXIMATELY 2868 SQUARE FEET.
APPROXIMATELY 2975 SQUARE FEET WITH SUNROOM



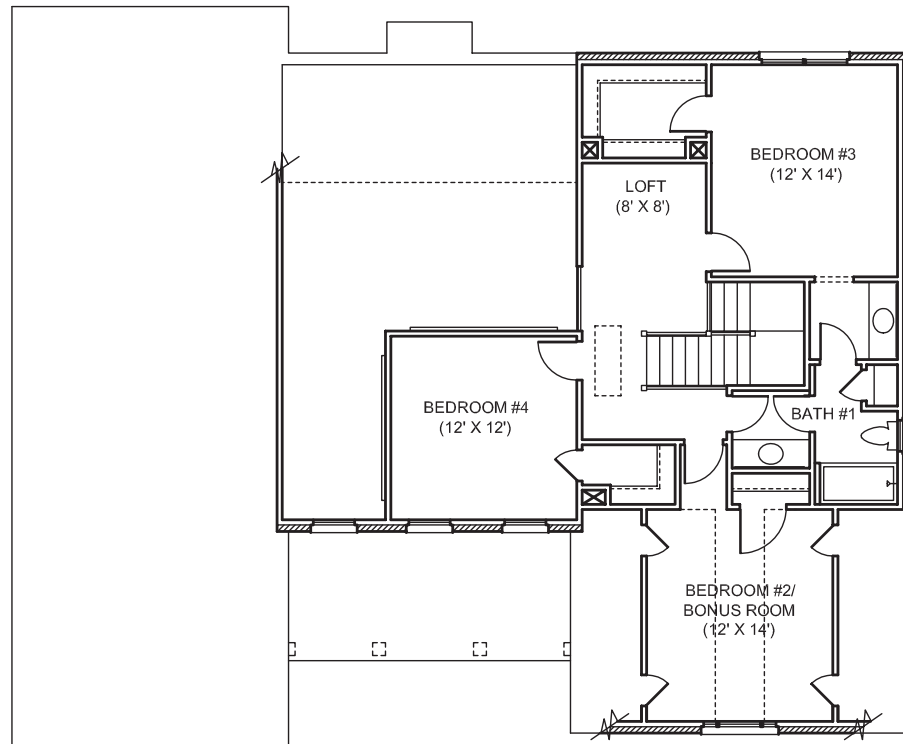
Fabulous flexible plan with owner's suite and another bedroom or study on first floor. Two-story foyer opens to elegant dining room offset by columns. Delightful kitchen with pantry and island opens to breakfast room and large great room. Upstairs features three bedrooms (two with walk-in closets) and a full "jack and jill" type bath. Bedroom could be bonus room, media room, or hobby area. The loft is the perfect place for a computer desk or a reading nook. Add the optional sunroom to create a welcoming area for conversation or relaxing. This plan adapts to any lifestyle and can change with the varying needs of its owners.

THE SCOTLAND

FIRST LEVEL



SECOND LEVEL



THE STRATFORD

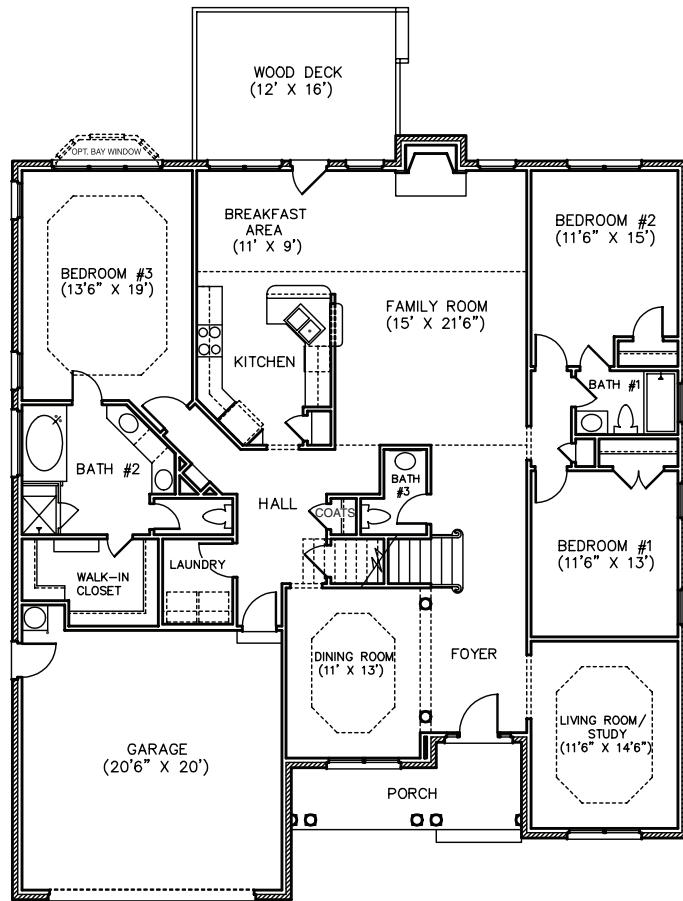
3 OR 4 BEDROOMS - 2 1/2 OR 3 1/2 BATHS
APPROX 2770 SQUARE FEET WITH FRONT OR SIDE ENTRY GARAGE



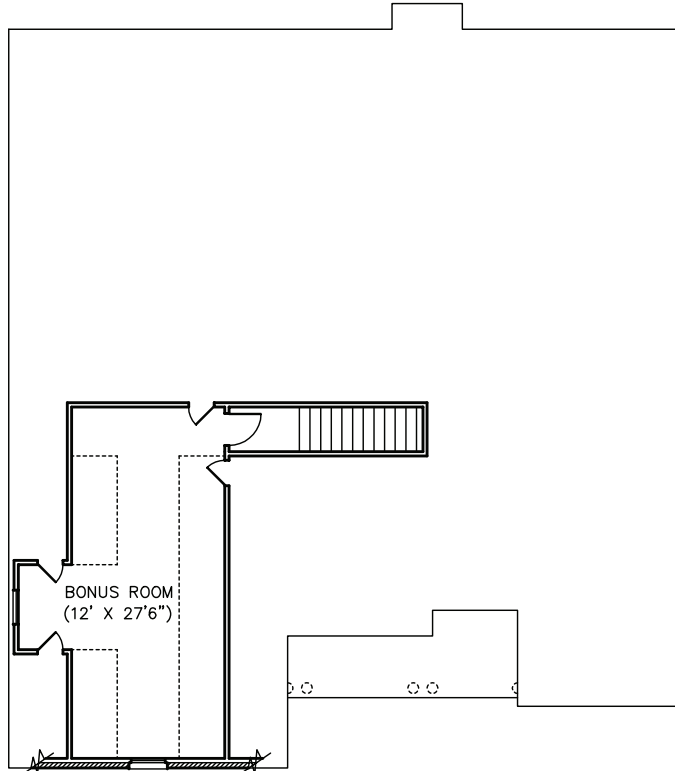
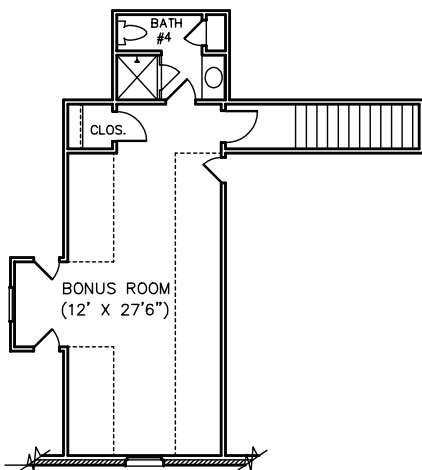
The Stratford, a wonderful one-story plan, offers an owner's retreat separate from the other bedrooms. Tray ceilings offer a distinctive touch to the owner's retreat, the dining room, and the living room/study. The family room with high ceilings opens to the spacious kitchen and breakfast area. The 429 sq. ft. bonus room upstairs is perfect for hobbies or play. The Stratford has 2,770 heated square feet with the bonus room or add a 3rd full bath and closet, making this upstairs space a convenient guest room.

THE STRATFORD

FIRST LEVEL

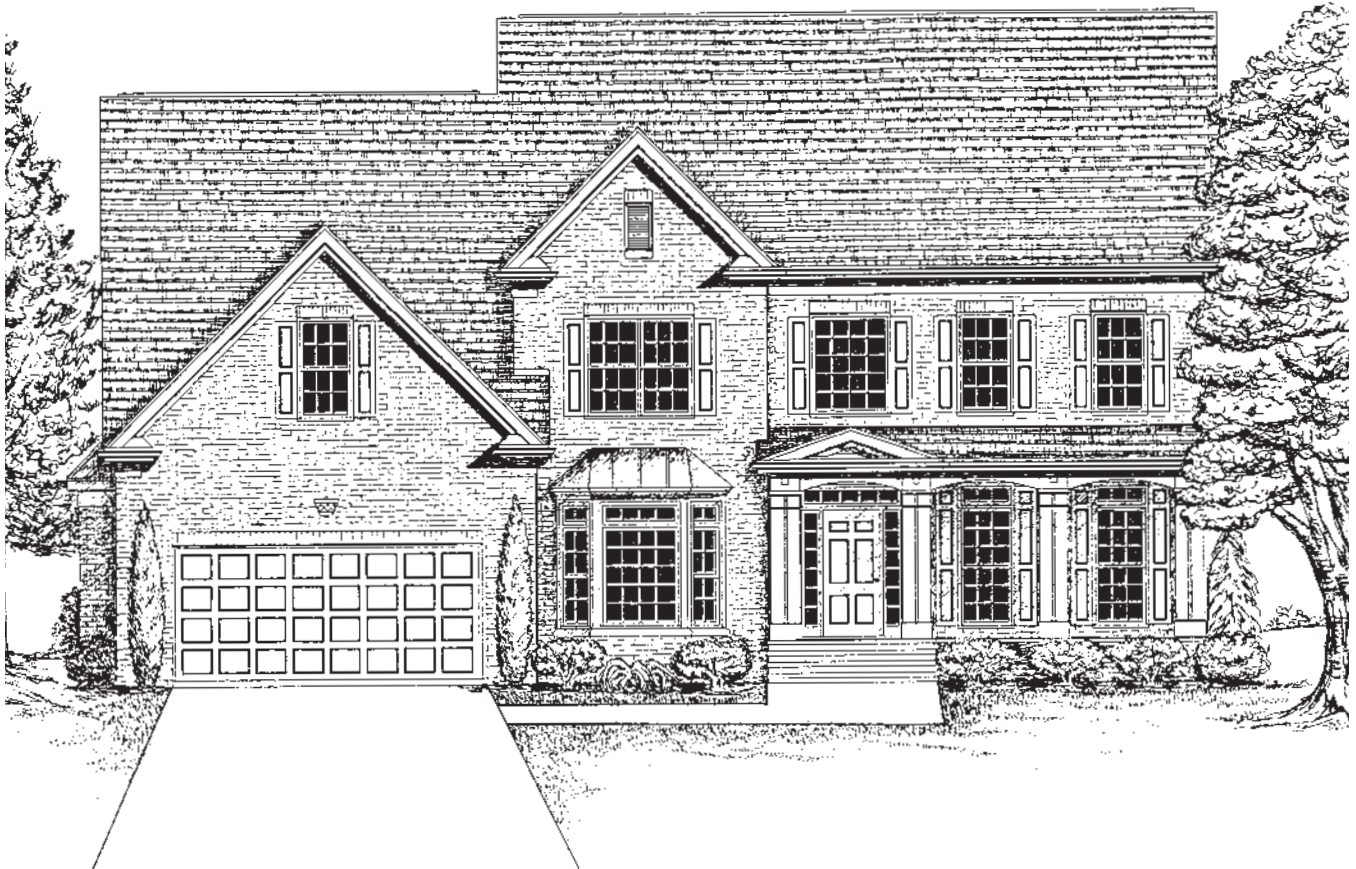


SECOND LEVEL



THE WARWICK

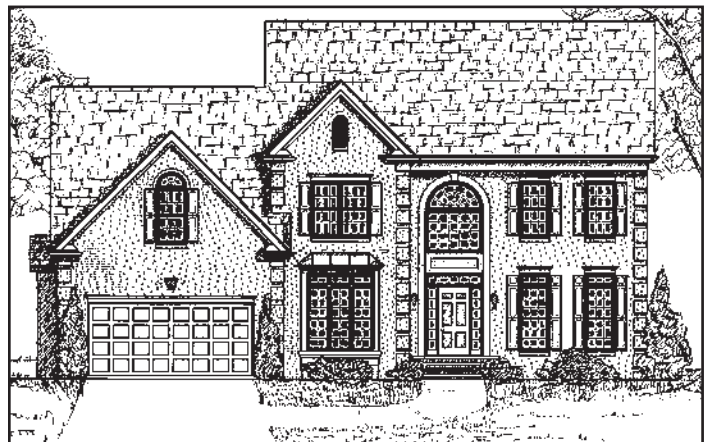
4/5 BEDROOMS - 3 BATHS
APPROX 3127 SQUARE FEET WITH FRONT or SIDE ENTRY GARAGE



Versatile airy plan with many possibilities for adapting to any lifestyle. A winding staircase accents the two story foyer which opens on one side to elegant formal areas with columns and to a study/guest suite on the other. Family room includes extra high ceilings and large windows with transoms and a back staircase.

A walk-in pantry and abundant cabinet space create a very desirable kitchen. Separate owner's suite offers tray ceiling and bath with dual vanities. Additionally, a fourth bedroom has private sitting area. The

Warwick has approximately 3127 square feet.



THE WARWICK

